

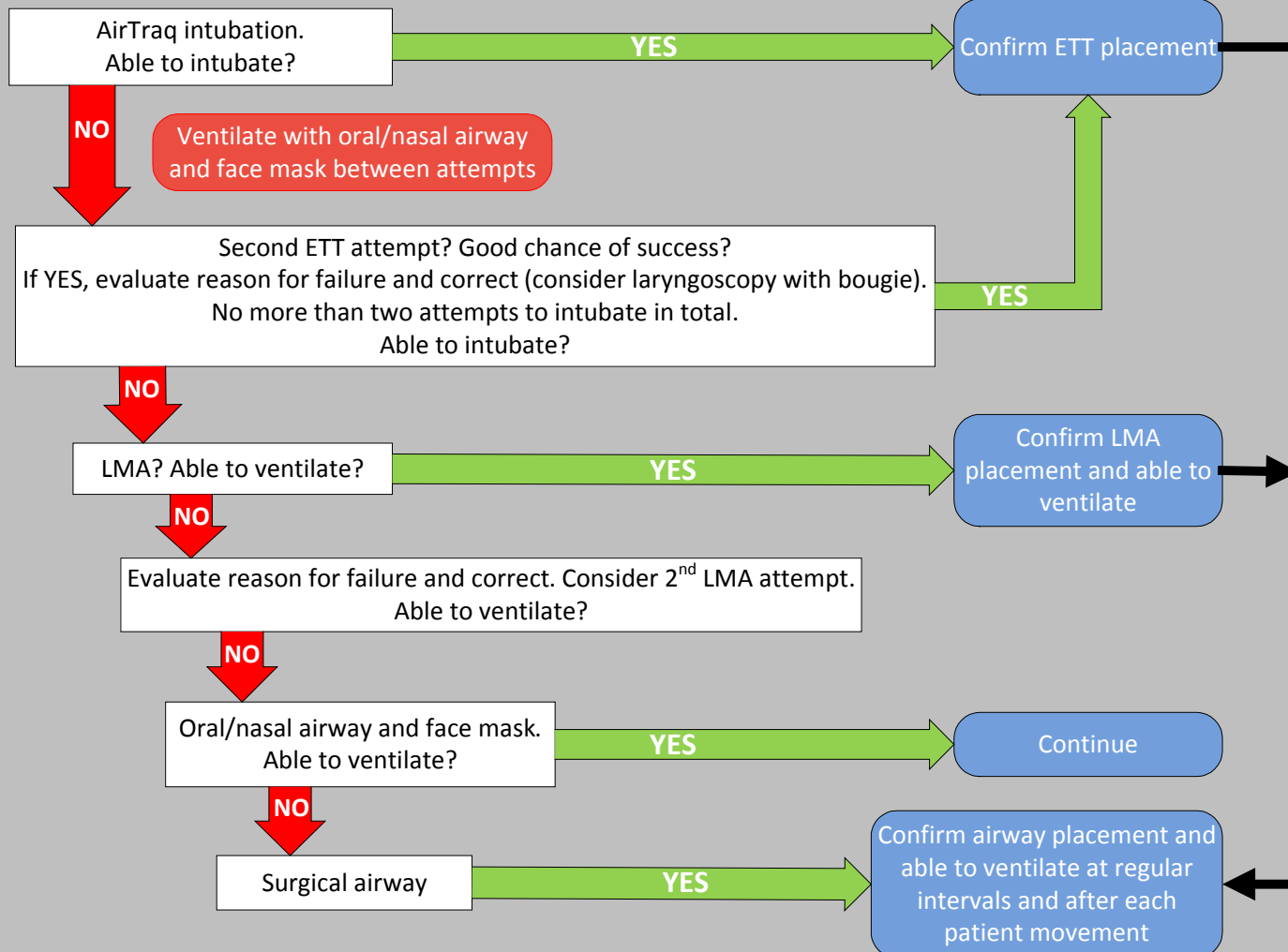
## CMG 3(b) – INTUBATION ALGORITHM

(Revised: January 2014)



### Planning and Preparation

Pre-oxygenation for at least 3 minutes. Prepare RSI drugs as required.  
Continuous O<sub>2</sub> via nasal cannula at 15 lpm. Have EtCO<sub>2</sub> connected. Continuous monitor recording.



- The end point is not necessarily placement of an ETT.
- If an ETT is placed, confirmation of correct placement and maintenance of placement is imperative.
- Use a cervical collar to assist in maintaining ETT/LMA position.
- There are to multiple checks of ETT position, using multiple methods, by multiple people.