



**KEEP**

## Follow directions from Emergency Services

Make sure you have access to emergency information.

FOR HELP IN FLOODS AND STORMS CALL

**132 500**



**CALL**

For general information during business hours **13 22 81**



**FOLLOW**

@ACT\_ESA @actemergencyservicesagency



**VISIT**

esa.act.gov.au



**DOWNLOAD**

BOM app



**LISTEN**

Local radio

**IN AN EMERGENCY CALL TRIPLE-ZERO**

**000**

## How can the ACTSES help?

The ACT State Emergency Service (ACTSES) is responsible for responding to floods in ACT. This includes planning for floods and educating the community on how to protect themselves and their property.

### The ACTSES can:

- give safety advice
- arrange for the delivery of essential supplies to people isolated by floodwater

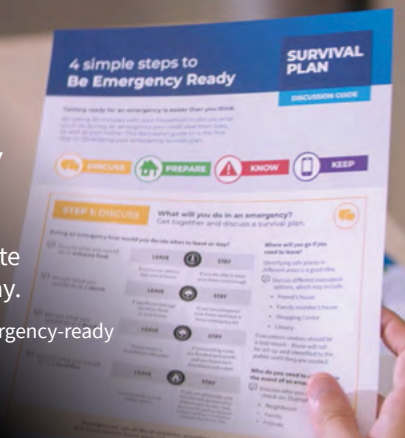


ACTSES volunteers can provide temporary repairs and relief to damaged property, but you will need to engage professional tradespeople to carry out permanent repairs.

## Are you Emergency Ready?

Download and complete your survival plan today.

Visit [esa.act.gov.au/be-emergency-ready](http://esa.act.gov.au/be-emergency-ready)



**Be Emergency Ready**

For more advice on floods and storms visit [esa.act.gov.au/be-emergency-ready](http://esa.act.gov.au/be-emergency-ready)



**ACT**  
Government



**ACT**  
**EMERGENCY**  
**SERVICES**  
**AGENCY**

# Be Flood Ready



Floods pose a risk to your life. Everyone should understand how to be safe in the event of a flood.



FOR HELP IN FLOODS AND STORMS CALL

**132 500**

# Are you Flood Ready?

The ACT State Emergency Service (ACTSES) encourages the community to take simple steps to be prepared and understand their flood risk in the ACT.

## Are you at risk?

The planned nature of Canberra has always taken into account the need to avoid residential development in flood prone areas. In the ACT, flooding is usually due to intense local rain or inundation of local rivers, creeks and lakes.

**Riverine floods** are floods due to the overflowing of rivers or due to slow or continued rain which causes the soil to slowly soak up with water.

**Flash floods** are floods that develop very rapidly and almost without warning. Flash flooding is more likely to happen than riverine flooding. Flash flooding will tend to occur over a local area or catchment and is caused by intense storms which may often be of short duration.



It's important to keep up to date with weather warnings issued by the Bureau of Meteorology and understand your flood risk.

Visit [bom.gov.au](http://bom.gov.au)



## DISCUSS

### Create a Survival Plan for your household

Download the Survival Plan Discussion Guide at [esa.act.gov.au](http://esa.act.gov.au)



#### RESEARCH YOUR AREA

Find out if you are in a flood prone area.

Find out at [esa.act.gov.au/flood-prone-areas](http://esa.act.gov.au/flood-prone-areas)



#### MAINTAIN YOUR HOME

Discuss who is responsible for home maintenance that could minimise flood damage.



#### PLAN FOR EVACUATION

Discuss where you would go and how you would travel there. Get to know your local area and identify possible evacuation routes.



## PREPARE

### Take action to prepare for a flood

Download and complete your Survival Plan at [esa.act.gov.au](http://esa.act.gov.au)



#### LEARN THE SIGNS

Learns the signs of flash flooding in your local area. These can include heavy rainfall and rushing or pooling water in low-lying areas.



#### INSURANCE

Keep your home and car insurance up-to-date.



## KNOW

### Know how to stay safe if flooding is expected in your area

Follow your plan and be prepared to evacuate your home if advised to do so.



#### STAY CLEAR

During severe weather, stay clear of possible flash flood areas such as water drains, creeks, rivers, causeways, culverts and low-lying areas.



#### LIMIT TRAVEL

Reconsider non-essential travel if roads and pathways are in flood prone areas.



#### STACK AND SECURE

Stack possessions, records, stock or equipment on benches and tables, placing electrical items on top. Secure objects that are likely to float and cause damage.



#### SEEK REFUGE

If you are trapped by floodwater seek refuge in the highest part of a sturdy building.



### If it's flooded, forget it!

A car can float in just 15cm of water. Never walk, ride or drive through floodwaters. Stay clear of creeks, streams, drains and causeways.

